



# CROUSE HEALTH

Affiliate of  Northwell Health®

# FACTS

- Is the New York State-designated **regional referral center for perinatal & neonatal intensive care (NICU) services**
- Home to the Crouse Neuroscience Institute, which features **the latest neuroendovascular stroke rescue technology**
- One of 10 **Comprehensive Stroke Centers** in New York State (and first area hospital to achieve 'Gold Plus' quality performance status from the American Heart/Stroke Associations)
- Only **bariatric (weight loss) surgery program** in CNY to earn both Blue Distinction Center + *and* Blue Distinction Center designation from Excellus BC/BS
- Largest **outpatient surgery program** in Central New York
- Operates the only **hospital-based substance abuse treatment service** in Central New York
- Performs more **GYN surgical procedures** than any other area hospital
- **Delivers more babies** than any other hospital in Central New York (nearly 4,000 in 2017)
- Only area hospital providing **overnight surgical hospitalist coverage 24/7**
- Operates the region's only **pediatric cardiac catheterization program**
- Has **graduated more than 5,000 students** from the Pomeroy College of Nursing since its founding in 1913
- Has the region's **largest, multi-specialty robotic surgery program**, performing over 1,000 procedures annually
- Only **American Heart Association designated Mission: Lifeline** hospital in CNY



Official hospital of  
Syracuse Athletics®

## Economic & Community Impact – 2017

**\$486,000,000**

Crouse Health's annual operating budget. The health system's payroll expenditures serve as an important economic stimulus, creating and supporting jobs throughout the local and regional economies.

**\$200,831,908**

Total payroll in 2017

**\$56,652,000**

Total cost of employee benefits in 2017

Dollars earned by our employees are spent on groceries, clothing, mortgage payments, rent and entertainment, which is more than **\$722,000,000\*** in economic activity for the local/regional economy annually.

\* HANYS 2017 Economic Impact Report

**\$3,087,954**

Amount of charity care Crouse Health provided in 2017.

## Quality Healthcare – 2017

**443,000** Outpatients provided care

**82,000** Emergency services visits

**23,000** Patients admitted

**4,000** Babies delivered

## A Top CNY Employer

1	Upstate	9,136
2	Cornell University	8,610
3	St. Joseph's Health	4,660
4	Walmart	4,500
5	Syracuse University	4,407
6	Lockheed Martin MST	4,200
7	Price Chopper Supermarkets	4,000
8	<b>Crouse Health</b>	<b>3,100</b>
9	National Grid	2,200
10	Tops Friendly Markets	2,023

**91%**

Percentage of Crouse patients applying for charity care who received free or significantly reduced cost of care in 2017 (up from 88% in 2016). Nearly all of the remaining 9% received a discount on their hospital bill based on economic need and circumstances.

**\$35,634,711**

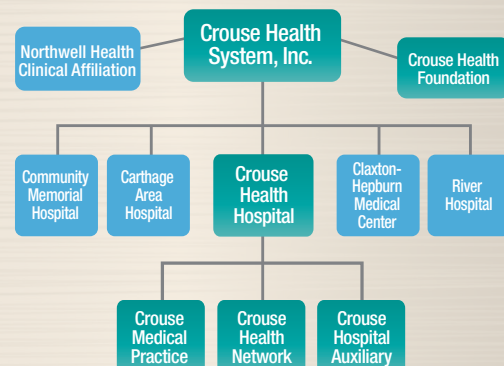
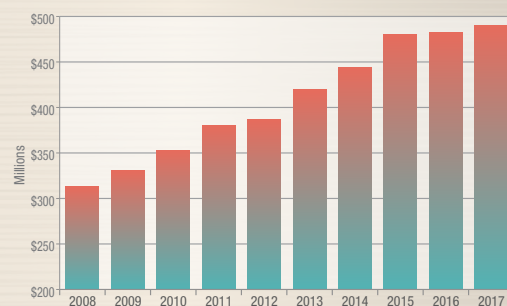
Medicaid subsidized healthcare services at Crouse in 2017 (difference between actual cost to deliver care and government reimbursement to the hospital).

**\$8,791,054**

Amount of bad debt service Crouse Health provided to patients in 2017. Bad debt is the dollar amount of healthcare services provided to self-pay patients that was not paid and therefore not received by the hospital.



## Crouse Health Revenue Growth – 2008-2017



Source: CenterState Corporation for Economic Opportunity