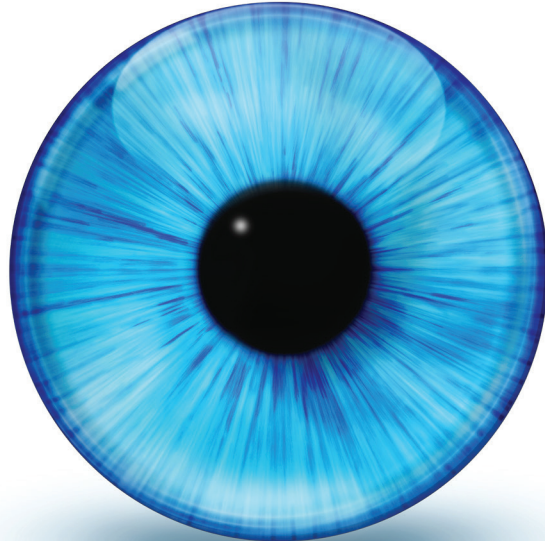


TAKE A LOOK AT WHY YOU'RE SPECIAL!

Diabetics should get a special eye exam in addition to a regular eye exam that views the retina for damage.



Diabetes can damage blood vessels in your eyes resulting in blindness.

BLINDNESS CAN BE REDUCED BY **95%** IN DIABETICS!

Having a yearly diabetic retinal eye exam to detect damage, along with early treatment and continued follow-ups can prevent loss of sight.

Remember:

- Yearly screenings help to find diabetic eye disease before symptoms have started
- Most insurance plans pay for diabetic retinal exams in full**
- Present both Medical and Vision Insurance Cards at exam

**IMPORTANT:
DON'T FORGET!**

Provide your primary care provider with a copy of your eye exam.

**Verify coverage and benefits by calling the customer service number 1-800-499-1275 (TTY 1-800-421-1220), located on the back of your ID card. Hours of operation are 8:00am - 8:00pm (Monday -Thursday) and 9:00am - 8:00pm (Friday). Closed Noon - 1:00pm (Monday - Friday).

Excellus BlueCross BlueShield complies with applicable Federal civil rights laws and does not discriminate on the basis of race, color, national origin, age, disability, or sex.

ATENCIÓN: si habla español, tiene a su disposición servicios gratuitos de asistencia lingüística. Llame al 1-800-659-1986 (TTY: 1-800-421-1220).

注意：如果您使用繁體中文，您可以免費獲得語言援助服務。請致電 1-800-659-1986 (TTY: 1-800-421-1220)。

A nonprofit independent licensee of the Blue Cross Blue Shield Association

B-7016 / 13648-19HCNM COMM

